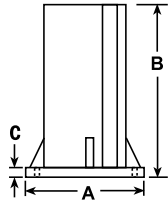
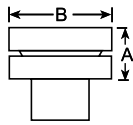


► **Support Base**



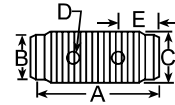
Cylinder Tons	Part No.	A (mm)	B (mm)	C (in.)
10	420062	177,8	177,8	7/16
25	420063	127,0	127,0	7/16

► **Swivel Cap**



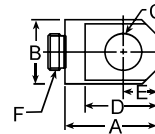
Cylinder Tons	Part No.	A (mm)	B (mm)
10 or 15	350144	22,4	36,5
25	350145	28,7	54,0
55 or 75	350376	31,8	71,4
100	351574	48,5	85,7

► **Threaded Connector**



Cylinder Tons	Part No.	A (mm)	B (mm)	C (in.)	D (mm)	E (mm)
5	25748	44,5	22,4 Dia.	3/4 - 14 NPSM	4,8 Dia.	12,7
10	25664	41,4	36,6 Dia.	1 1/4 - 11 1/2 NPSM	7,9 Dia.	14,2
25	25654	57,2	57,2 Dia.	2 - 11 1/2 NPSM	9,7 Dia.	16,0

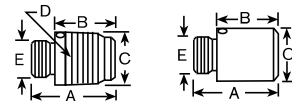
► **Piston Clevis**



Cylinder Tons	Part No.	A (mm)	B (mm)	C (mm)	D (mm)	E (mm)	F (in.)
5	350095	44,5	28,7	16,0	36,6	16,0	3/4 - 16
10 or 15*	350094	65,0	42,9	31,8	58,7	25,4	1 - 8
25**	420059	74,7	57,2	50,8	68,3	31,8	1 1/2 - 16

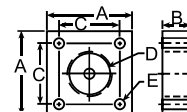
\* Can be used with RD106, RD1010 Cylinder.  
\*\* RD256 & RD2514

► **Threaded & Plain Adapters**



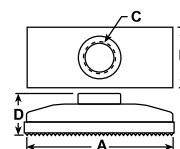
Cylinder Tons	Part No.	A (mm)	B (mm)	C (mm)	D (in.)	E (in.)
5	202178 (threaded)	41,4	28,7	26,9 Dia.	3/4 - 14 NPT	3/4 - 16 UNF-2A
10 or 15*	202179 (threaded)	46,0	26,9	41,4 Dia.	1 1/4 - 11 1/2 NPT	1 - 8 UNC-2A
25	202180 (threaded)	69,9	47,8	60,5 Dia.	2 - 11 1/2 NPT	1 1/2 - 16 UN-2A
10 or 15	350724 (plain)	50,8	31,8	37,6 Dia.	—	1 - 8 UNC-2A
25	350723 (plain)	54,1	31,8	57,2 Dia.	—	1 1/2 - 16 UN-2A

► **Cylinder Mounting Plate**



Cylinder Tons	Part No.	A (mm)	B (mm)	C (mm)	D (in.)	E (mm)
5	350099	76,2	25,4	54,1	1 1/2 - 16 UN-2B	8,6
10	350100	88,9	25,4	66,8	2 1/4 - 14 UNS-2B	8,6
15	350184	88,9	25,4	66,8	2 3/4 - 16 UN-2B	8,6
25	420064	127,0	50,8	100,8	3 5/16 - 12 UN-2B	16,8

► **Cylinder Flat Base**



Cylinder Tons	Part No.	A (mm)	B (mm)	C (in.)	D (mm)
5	25750	114,3	63,5	3/4 - 14 NPSM	34,0
10 or 15*	32325	9,5	88,9	1 1/4 - 11 1/2 NPSM	36,6

\* Items require threaded adapter when used with "C" series cylinders. Can be used on threaded "CBT" cylinders without the use of an adapter.